

Compressors

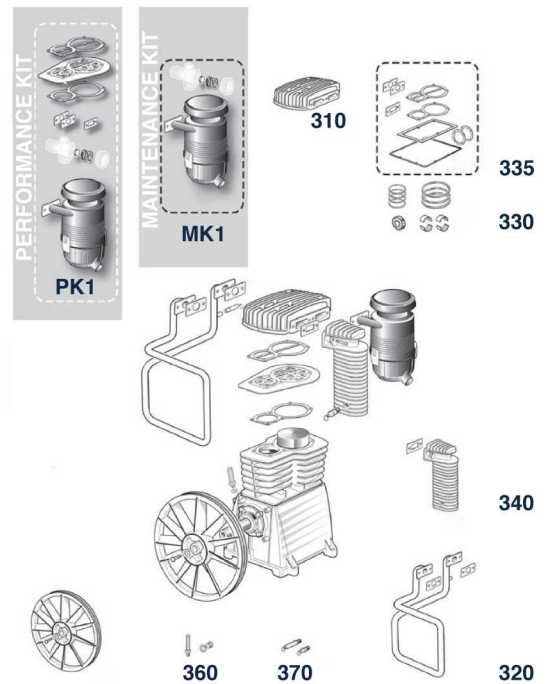
# PUMP



  
 MADE IN ITALY

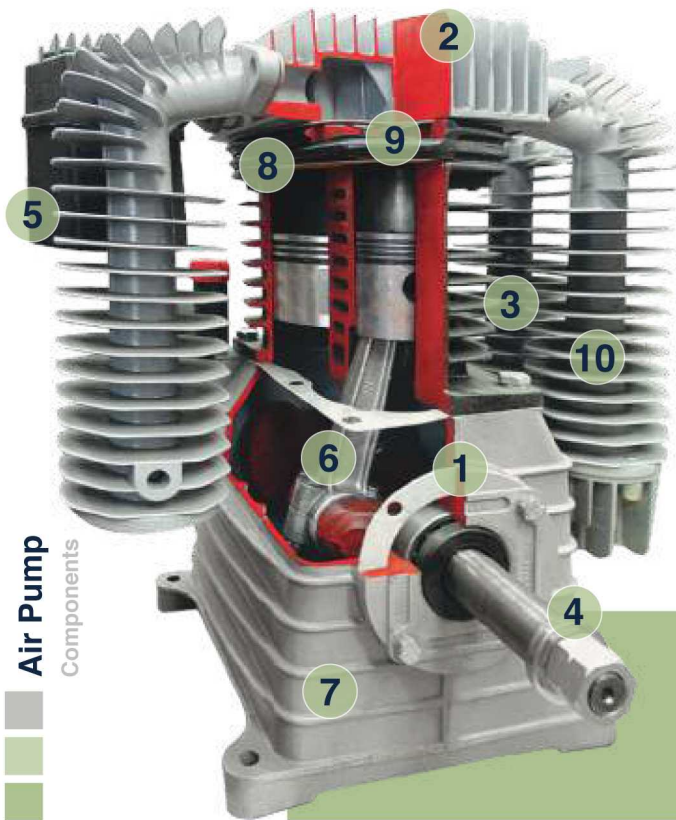

## B SERIES

  
 MADE IN ITALY


PUMP KIT	Description
310	Cylinder Head Kit
320	Intercooler Kit
330	Upgrade Kit
335	Gasket Kit
340	Aftercooler Kit
350	Flywheel Kit
360	Oil Level Kit
370	Valve Kit
MK1	Maintenance Kit
PK1	Performance Kit



Model										
	L/min	CFM	m <sup>3</sup> /h	HP	KW	bar	p.s.i	N.Cylinder	kg	r.p.m
B 2800	255	9	15.3	2	1.5	11	159	2 Single Stage	10	1400
B 3800B	330	11.6	19.8	3	2	11	159	2 Single Stage	15	1400
B 5900B	653	23	39.2	5.5	4	11	159	2 Double Stage	17	1400
B 6000	827	29.2	49.6	7.5	5.5	11	159	2 Double Stage	26	1400
B 7000	1210	42.7	72.6	10	7.5	11	159	2 Double Stage	38	1300


**Air Pump**  
 Components

# K SERIES

MADE IN ITALY



Low Vibrations



Heavy Duty Service



Low Speed



bar 11 Max

HP 20 to 2 From

Strong and Reliable

High Performances

Long Life



Belt-driven single and two-stage pumps, designed to guarantee high performance, efficiency, and reliability over time.

**BEARINGS**  
**CRANKSHAFT**


High-quality ball bearings ensure reliable operation under all conditions.



Electronically balanced crankshaft with low-friction rods for high efficiency.

**PUMP HEAD**  
**CRANKCASE**


Aluminium die-cast body with large fins for superior heat dissipation and cooling.



High-capacity oil tank with internal resin coating prevents leaks and vibration.

**CYLINDER**  
**VALVE PLATE**


Cast iron construction is strong, durable, and ensures low oil consumption.



Cast iron body with oversized air passages for improved cooling and performance.

**FLYWHEEL**  
**VALVE GASKET**


Flywheel blades are designed for maximum cooling efficiency.









Stainless steel with elastomer inserts ensures sealing and long life.

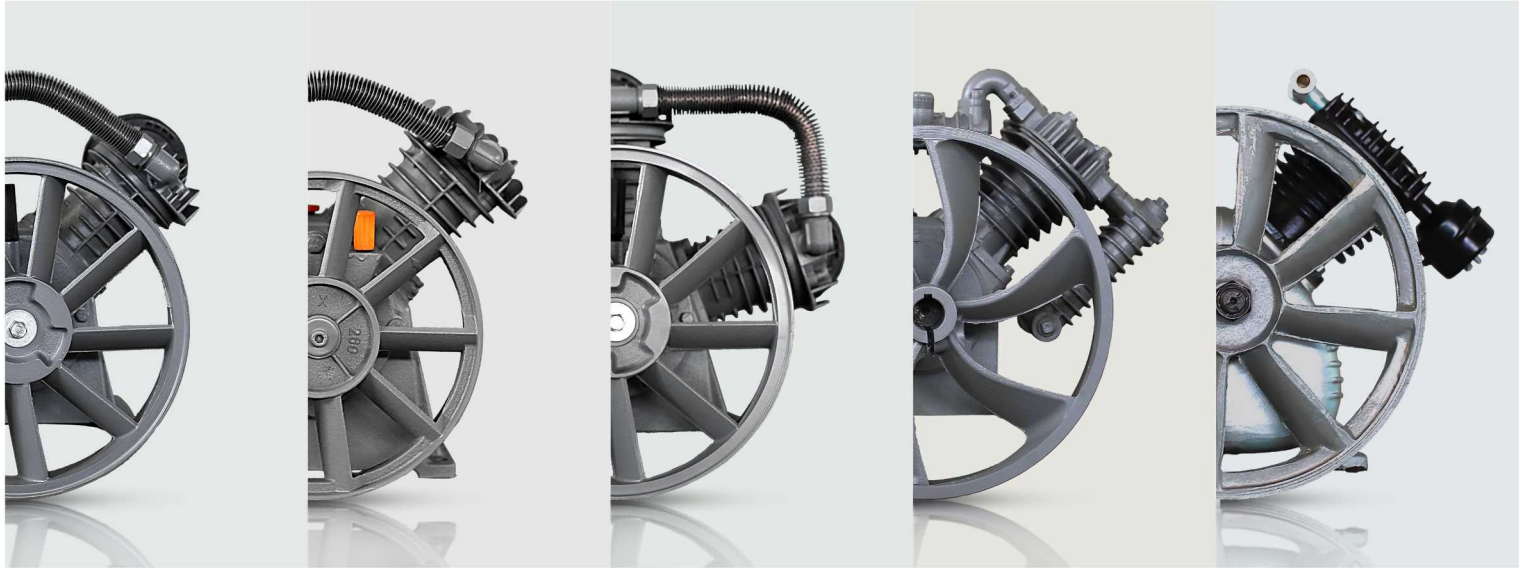
**FILTER**  
**AFTERCOOLER**


Labyrinth system reduces noise and extends filter life with large dust elements.



Die-cast aluminium parts with large fins ensure optimal cooling.

Model										
	L/min	CFM	m <sup>3</sup> /h	HP	KW	bar	p.s.i	N.Cylinder	kg	r.p.m
K 11	260	9.2	15.6	2	1.5	10	131	1 Single Stage	10	1000
K 17	320	16.4	27.9	3	2.2	10	131	1 Single Stage	15	1000
K 18	539	19	32.4	4	3	10	131	1 Single Stage	17	1100
K 28	650	23.4	39.7	5.5	4	11	159	2 Double Stage	26	1290
K 30	872	31	52.3	7.5	5.5	11	159	2 Double Stage	38	1150
K 50	1290	43.8	74.4	10	7.5	11	159	4 Double Stage	71	1150
K 60	1745	62	104.6	15	11	11	159	4 Double Stage	75	1200
K 100	2148	75.9	128.9	20	15	11	159	4 Double Stage	128	1000



# DC SERIES

Model										
	DC	L/min	CFM	m³/h	HP	KW	bar	p.s.i	N.Cylinder	Tank
DC 1051	60	2.1	3.6	1	0.75	8	116	1*105	50	950
DC 1065	138	4.8	8.2	1	0.75	8	116	1*65	80	1180
DC 2065-1	250	8.8	15	2	1.5	8	116	2*65	250	1180
DC 2065-3	250	8.8	15	2	1.5	8	116	2*65	250	1180
DC 3065-1	350	12.3	21	3	2.2	8	116	3*65	350	1100
DC 3065-3	350	12.3	21	3	2.2	8	116	3*65	350	1100
DC 2080-1	380	13.4	22.8	4	3	10	145	2*80	350	1000
DC 2080-3	380	13.4	22.8	4	3	10	145	2*80	350	1000
DC 3080	500	17.6	30	5.5	4	10	145	3*80	500	950
DC 3080 S	500	17.6	30	5.5	4	10	145	3*80	500	950
DC 2095	600	22	36	5.5	4	10	145	2*95	500	1000
DC 2095 S	600	22	36	5.5	4	10	145	2*95	500	1000
DC 3090	800	28.2	48	7.5	5.5	8	116	3*90	500	860
DC 3090	800	28.2	48	7.5	5.5	8	116	3*90	750	860
DC 3095	900	31.7	54	10	7.5	8	116	3*95	500	920
DC 2105	1100	35.3	66	10	7.5	10	145	2*105+2*55	750	800
DC 2105 S	1100	35.3	66	10	7.5	10	145	2*105+2*55	750	800
DC 2105 S	1100	35.3	66	15	11	12	174	2*105+2*55	1000	800
DC 1155TW	1000	35	65	15	11	25	362	1*155+1*55	200	860
DC 1155	1600	56.5	96	15	11	10	145	1*155+1*55	1000	750
DC 1155 S	1600	56.5	96	15	11	10	145	1*155+1*55	1000	750
DC 3105 S	1800	63.5	108	15	11	10	145	3*105	1000	860
DC 3120 S	2500	88.3	150	20	15	10	145	3*120	1000	860
DC 2155 S	3000	106	180	30	22	10	145	2*155	1000	860

DC 1051-DC 2155 S  
 Technical Specifications

